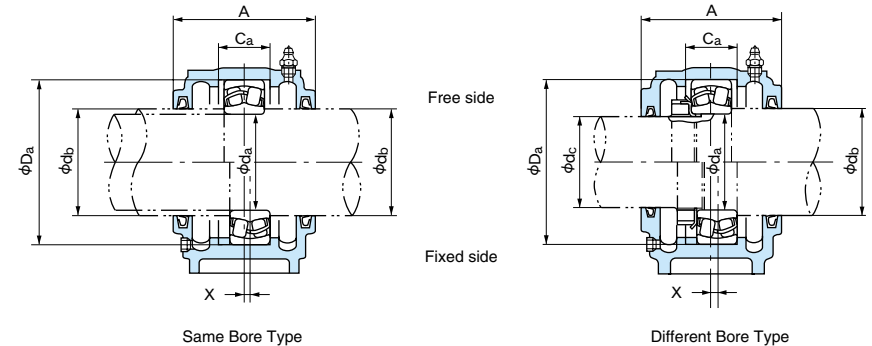
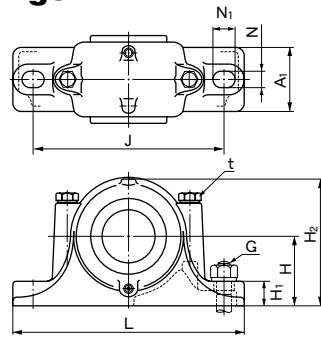


Plummer Block Housings

SN2, SN3 Series
for Bearing with
Cylindrical Bore

Shaft Diameter : 25 ~ 65mm



1N=0.102kgf

Shaft dia. d _a d _b d _c (mm)	Dimensions (mm)													Mass (kg) (Reference)	Designations		Applicable parts								
	D _a (H8)	H (h13)	J	N	N ₁	A	L	A ₁	H ₁	H ₂	C _a (H13)	G (Nominal)	t (Nominal Reference)		Same Bore Type	Different Bore Type	Self-aligning ball bearings	Spherical roller bearings	Nut	Locking washer	Oil seal		Locating ring		Y (Reference)
																					d _b side	d _c side	Designation	Q'ty	
25 30 ⁽¹⁾ 20	52	40	130	15	20	67	165	46	22	75	25	M12	M 8	SN205	SN205C	1205 2205	— 22205EX	AN05	AW05X	GS 7	GS 5	SR52×5 SR52×7	2 1	17 19	
	62	50	150	15	20	80	185	52	22	90	34	M12	M 8	SN305	SN305C	1305 2305	21305E —	AN05	AW05X	GS 7	GS 5	SR62×8.5 SR62×10	2 1	18 22	
30 35 ⁽¹⁾ 25	62	50	150	15	20	77	185	52	22	90	30	M12	M 8	SN206	SN206C	1206 2206	— 22206EX	AN06	AW06X	GS 8	GS 6	SR62×7 SR62×10	2 1	18 20	
	72	50	150	15	20	82	185	52	22	95	37	M12	M10	SN306	SN306C	1306 2306	21306E —	AN06	AW06X	GS 8	GS 6	SR72×9 SR72×10	2 1	19 23	
35 45 30	72	50	150	15	20	82	185	52	22	95	33	M12	M10	SN207	SN207C	1207 2207	— 22207EX	AN07	AW07X	GS10	GS 7	SR72×8 SR72×10	2 1	19 22	
	80	60	170	15	20	90	205	60	25	110	41	M12	M10	SN307	SN307C	1307 2307	21307E —	AN07	AW07X	GS10	GS 7	SR80×10 SR80×10	2 1	21 26	
40 50 35	80	60	170	15	20	85	205	60	25	110	33	M12	M10	SN208	SN208C	1208 2208	— 22208EX	AN08	AW08X	GS11	GS 8	SR80×7.5 SR80×10	2 1	21 23	
	90	60	170	15	20	95	205	60	25	115	43	M12	M10	SN308	SN308C	1308 2308	21308E 22308EX	AN08	AW08X	GS11	GS 8	SR90×10 SR90×10	2 1	23 28	
45 55 40	85	60	170	15	20	85	205	60	25	112	31	M12	M10	SN209	SN209C	1209 2209	— 22209EX	AN09	AW09X	GS12	GS 9	SR85×6 SR85×8	2 1	22 24	
	100	70	210	18	23	105	255	70	28	130	46	M16	M12	SN309	SN309C	1309 2309	21309E 22309EX	AN09	AW09X	GS12	GS 9	SR100×10.5 SR100×10	2 1	25 31	
50 60 45	90	60	170	15	20	90	205	60	25	115	33	M12	M10	SN210	SN210C	1210 2210	— 22210EX	AN10	AW10X	GS13	GS10	SR90×6.5 SR90×10	2 1	24 25	
	110	70	210	18	23	115	255	70	30	135	50	M16	M12	SN310	SN310C	1310 2310	21310E 22310EX	AN10	AW10X	GS13	GS10	SR110×11.5 SR110×10	2 1	27 34	
55 65 50	100	70	210	18	23	95	255	70	28	130	33	M16	M12	SN211	SN211C	1211 2211	— 22211EX	AN11	AW11X	GS15	GS11	SR100×6 SR100×8	2 1	25 27	
	120	80	230	18	23	120	275	80	30	150	53	M16	M12	SN311	SN311C	1311 2311	21311E 22311EX	AN11	AW11X	GS15	GS11	SR120×12 SR120×10	2 1	29 36	
60 70 ⁽¹⁾ 55	110	70	210	18	23	105	255	70	30	135	38	M16	M12	SN212	SN212C	1212 2212	— 22212EX	AN12	AW12X	GS16	GS12	SR110×8 SR110×10	2 1	26 29	
	130	80	230	18	23	125	280	80	30	155	56	M16	M12	SN312	SN312C	1312 2312	21312E 22312EX	AN12	AW12X	GS16	GS12	SR130×12.5 SR130×10	2 1	31 39	
65 75 ⁽¹⁾ 60	120	80	230	18	23	110	275	80	30	150	43	M16	M12	SN213	SN213C	1213 2213	— 22213EX	AN13	AW13X	GS17	GS13	SR120×10 SR120×12	2 1	28 32	
	140	95	260	22	27	130	315	90	32	175	58	M20	M16	SN313	SN313C	1313 2313	21313E 22313EX	AN13	AW13X	GS17	GS13	SR140×12.5 SR140×10	2 1	33 40	

Note (1): When heavy axial load is applied, a spacer with large O.D. and small inner chamfer must be used between the bearing and shaft shoulder to obtain a sufficient contact area.

Remarks (1): Plummer block housings are housings with oil seals, a plug and a grease nipple only. To make a complete unit, please order the corresponding bearing, locating rings and other parts shown in the table additionally.

(2): The masses in the table do not include the bearing, nut and locating rings but the bolts.
 (3): H8, H13 and h13 in the table means tolerance classes specified in JIS B 0401.
 (4): The tolerance of locating ring O.D. is h12, and 0 - -0.2 for the width.

(5): The threads for plugs are PT1/8. SN205 does not have a drain hole.

(6): When one locating ring is used for fixed-end, the offset (X dimension) of bearing center from the center of the plummer block housing is a half of the locating ring width.

(7): ZF type oil seals are also available instead of GS type seals.

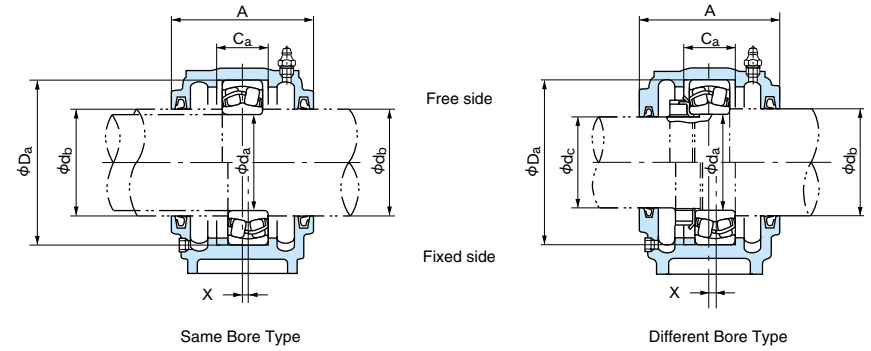
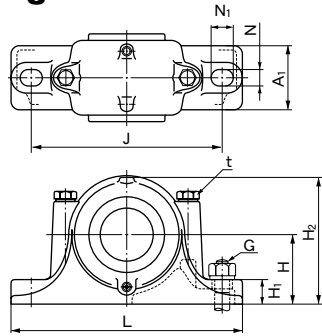
(8): SN--C type housings for different shaft diameters d_b or d_c from the dimensions shown above are also available.

(9): The dimension Y indicates the distance from the bearing center to the outer side face of the nut.

Plummer Block Housings

SN2, SN3 Series
for Bearing with
Cylindrical Bore

Shaft Diameter : 70 ~ 160mm



1N=0.102kgf

Shaft dia. d _a d _b d _c (mm)	Dimensions (mm)													Mass (kg) (Reference)	Designations		Applicable parts										
	D _a (H8)	H (h13)	J	N	N	A	L	A ₁	H ₁	H ₂	C _a (H13)	G (Nominal)	t (Nominal Reference)		Same Bore Type	Different Bore Type	Self-aligning ball bearings	Spherical roller bearings	Nut	Locking washer	Oil seal		Locating ring		Y (Reference)		
																					d _b side	d _c side	Designation	Q'ty			
70	80	65	125	80	230	18	23	115	275	80	30	155	44	M16	M12	6.2	SN214	SN214C	1214 2214	— 22214EX	AN14	AW14X	GS18	GS15	SR125×10 SR125×13	2 1	28 32
	80 ⁽¹⁾	65	150	95	260	22	27	130	320	90	32	185	61	M20	M16	10	SN314	SN314C	1314 2314	— 22314EX	AN14	AW14X	GS18	GS15	SR150×13 SR150×10	2 1	34 42
75	85	70	130	80	230	18	23	115	280	80	30	155	41	M16	M12	7.0	SN215	SN215C	1215 2215	— 22215EX	AN15	AW15X	GS19	GS16	SR130×8 SR130×10	2 1	30 33
	85 ⁽¹⁾	70	160	100	290	22	27	140	345	100	35	195	65	M20	M16	11	SN315	SN315C	1315 2315	— 22315EX	AN15	AW15X	GS19	GS16	SR160×14 SR160×10	2 1	36 45
80	90	75	140	95	260	22	27	120	315	90	32	175	43	M20	M16	9.0	SN216	SN216C	1216 2216	— 22216EX	AN16	AW16X	GS20	GS17	SR140×8.5 SR140×10	2 1	32 36
	90 ⁽¹⁾	75	170	112	290	22	27	145	345	100	35	212	68	M20	M16	13	SN316	SN316C	1316 2316	— 22316EX	AN16	AW16X	GS20	GS17	SR170×14.5 SR170×10	2 1	39 48
85	95	80	150	95	260	22	27	125	320	90	32	185	46	M20	M16	10	SN217	SN217C	1217 2217	— 22217EX	AN17	AW17X	GS21	GS18	SR150×9 SR150×10	2 1	34 38
	95 ⁽¹⁾	80	180	112	320	26	32	155	380	110	40	223	70	M24	M20	15	SN317	SN317C	1317 2317	— 22317EX	AN17	AW17X	GS21	GS18	SR180×14.5 SR180×10	2 1	41 50
90	100	85	160	100	290	22	27	145	345	100	35	195	62.4	M20	M16	13	SN218	SN218C	1218 2218 —	— 22218EX 23218E	AN18	AW18X	GS22	GS19	SR160×16.2 SR160×11.2 SR160×10	2 2 1	35 40 46
95	110	90	170	112	290	22	27	140	345	100	35	210	53	M20	M16	15	SN219	SN219C	1219 2219	— 22219EX	AN19	AW19X	GS24	GS20	SR170×10.5 SR170×10	2 1	37 43
100	115	95	180	112	320	26	32	160	380	110	40	218	70.3	M24	M20	19	SN220	SN220C	1220 2220 —	— 22220EX 23220E	AN20	AW20X	GS26	GS21	SR180×18.1 SR180×12.1 SR180×10	2 2 1	39 45 52
110	125	105	200	125	350	26	32	175	410	120	45	240	80	M24	M20	20	SN222	SN222C	1222 2222 —	— 22222EX 23222E	AN22	AW22X	GS28	GS23	SR200×21 SR200×13.5 SR200×10	2 2 1	42 50 58
120	135	115	215	140	350	26	32	185	410	120	45	270	86	M24	M20	25	SN224	SN224C	— —	— 22224EX 23224E	AN24	AW24X	GS30	GS26	SR215×14 SR215×10	2 1	53 62
130	145	125	230	150	380	28	36	190	445	130	50	290	90	M24	M24	30	SN226	SN226C	— —	— 22226EX 23226E	AN26	AW26	GS33	GS28	SR230×13 SR230×10	2 1	57 65
140	155	135	250	150	420	33	42	205	500	150	50	305	98	M30	M24	38	SN228	SN228C	— —	— 22228EX 23228E	AN28	AW28	GS35	GS30	SR250×15 SR250×10	2 1	60 70
150	165	145	270	160	450	33	42	220	530	160	60	325	106	M30	M24	46	SN230	SN230C	— —	— 22230E 23230E	AN30	AW30	GS37	GS33	SR270×16.5 SR270×10	2 1	65 76
160	175	150	290	170	470	33	42	235	550	160	60	345	114	M30	M24	50	SN232	SN232C	— —	— 22232E 23232E	AN32	AW32	GS39	GS34	SR290×17 SR290×10	2 1	71 83

Note (1): When heavy axial load is applied, a spacer with large O.D. and small inner chamfer must be used between the bearing and shaft shoulder to obtain a sufficient contact area.
 Remarks (1): Plummer block housings are housings with oil seals, a plug and a grease nipple only. To make a complete unit, please order the corresponding bearing, locating rings and other parts shown in the table additionally.
 (2): The masses in the table do not include the bearing, nut and locating rings but the bolts.
 (3): H8, H13 and h13 in the table means tolerance classes specified in JIS B 0401.
 (4): The tolerance of locating ring O.D. is h12, and 0 ~ -0.2 for the width.

(5): Plummer block housings SN224 and larger are provided with eye bolts.
 (6): The threads for plugs are PT1/8 for SN316 and smaller, and PT1/4 for the others.
 (7): When one locating ring is used for fixed-end, the offset (X dimension) of bearing center from the center of the plummer block housing is a half of the locating ring width.
 (8): ZF type oil seals are also available instead of GS type seals.
 (9): SN--C type housings for different shaft diameters d_b or d_c from the dimensions shown above are also available.
 (10): The dimension Y indicates the distance from the bearing center to the outer side face of the nut.